



BONNINGTON MAINS QUARRY

INTRODUCTION

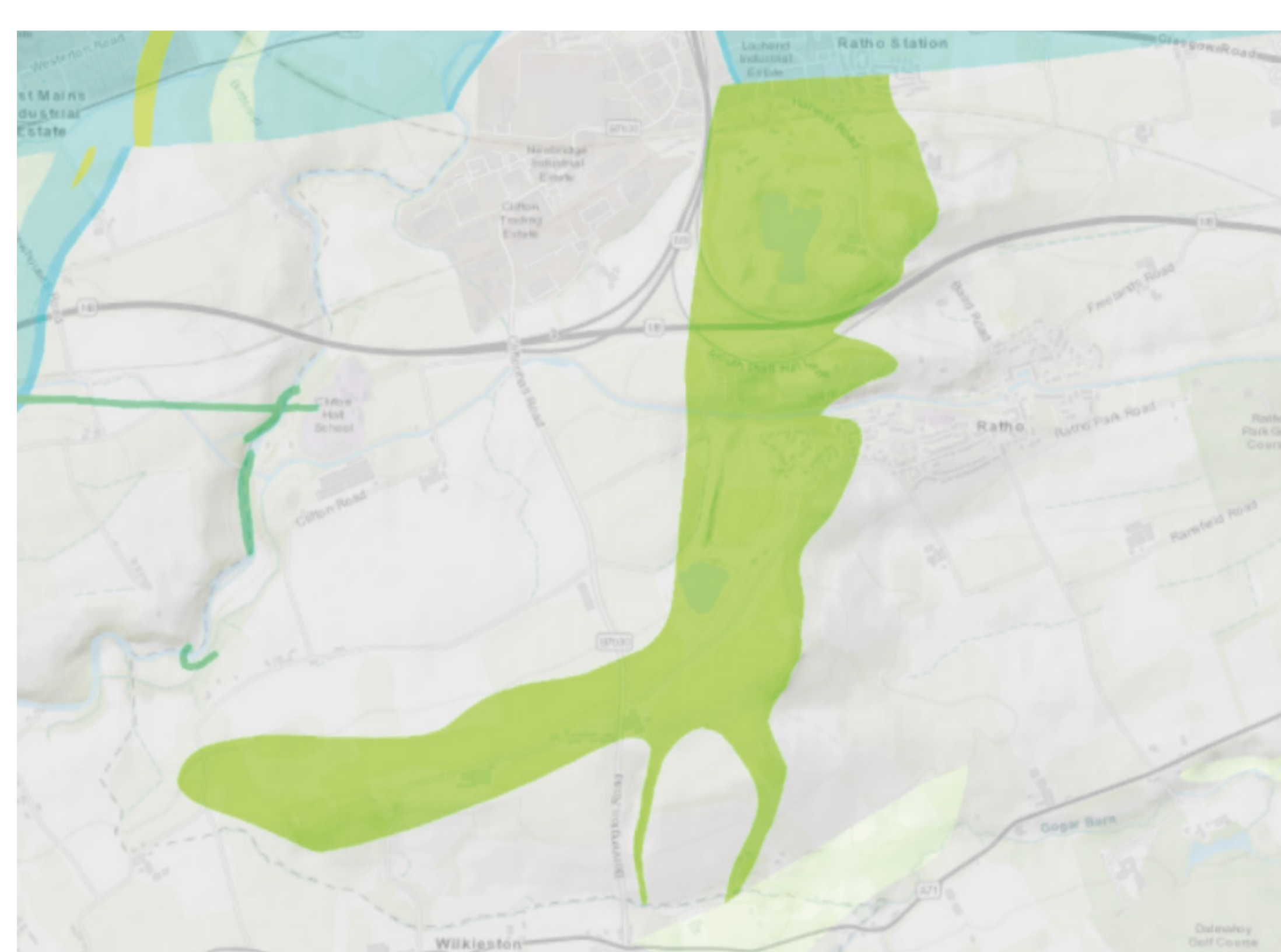
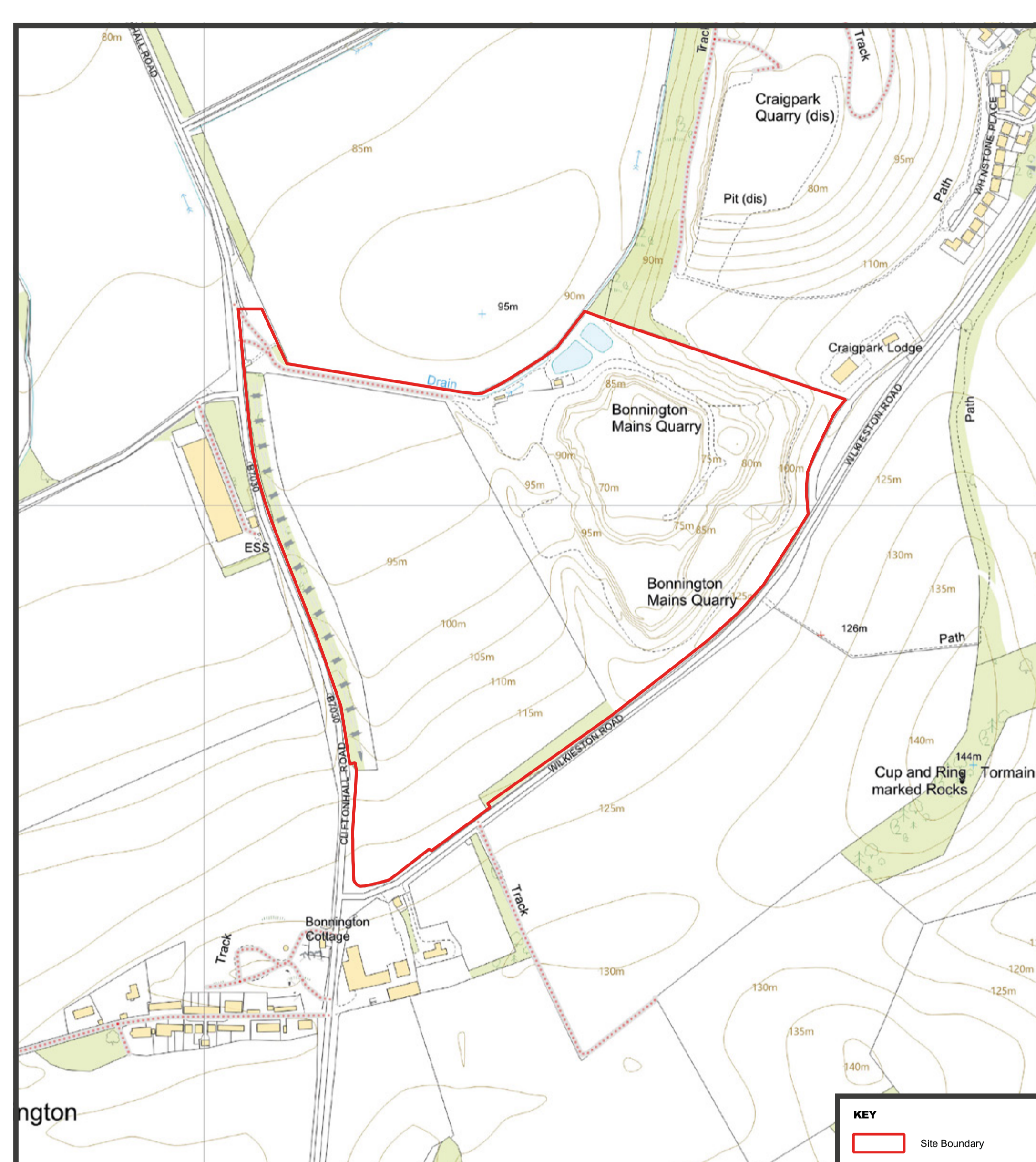
SITE LOCATION

Bonnington Mains Quarry is located to the west of Edinburgh and east of Livingston.

The closest settlements are Ratho, located to the north east of the site and the village of Bonnington, located to the south west.

Access to the quarry is taken via Cliftonhall Road which leads north towards the M9 and M8 motorways via the Newbridge Industrial Estate.

Agricultural fields and small woodlands are located immediately to the north, west and south of the site. The former Craigpark quarry and landfill is located to the east of the site.



GEOLOGY

The solid geology of the Application Site consists of a quartz dolerite sill of post-Carboniferous age (approx. 300 million years old).

The sill extends from Newbridge in the north down to as far as Bonnington Mains farm in the south (see green shading) and has been worked at a number of quarries in the area, including Hillwood, Ratho, Craigpark and Bonnington Mains.

The dolerite sill is overlain by sandstones, bolder clay and shales. The dolerite sill is generally between 50m and 60m thick.

SITE HISTORY

Development of Bonnington Mains Quarry commenced in the 1990's. Since opening, the quarry has produced millions of tonnes of construction aggregates for use throughout the central belt of Scotland. The site was temporarily closed in 2011 and reopened in 2018.



MARKET AREA

Bonnington Mains Quarry benefits from excellent access onto the M8, M9 and M90 motorway network. The mineral extracted from the quarry is used locally, primarily within Edinburgh and the Lothians.