

# TINCORN HILL QUARRY

## INTRODUCTION

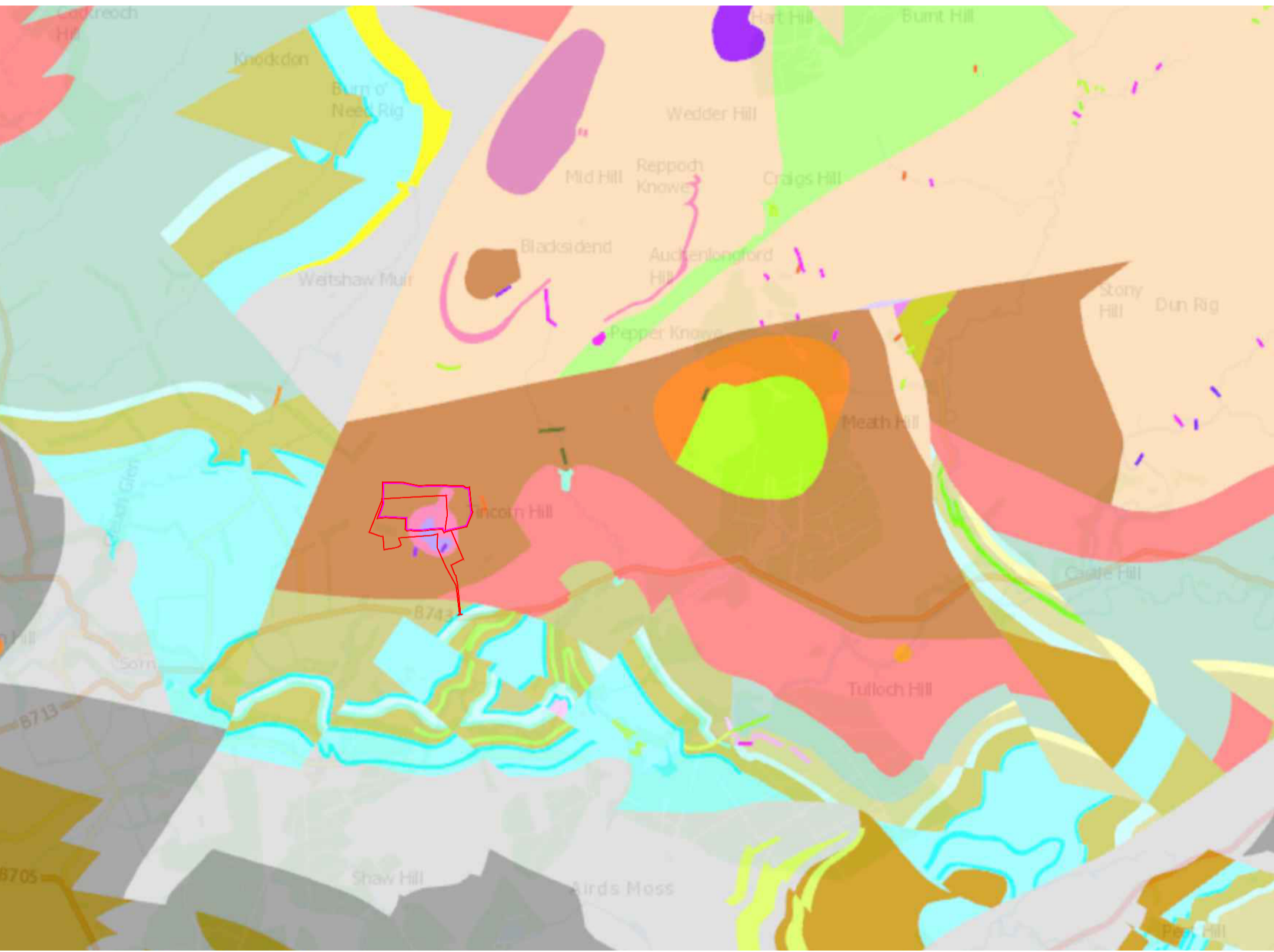
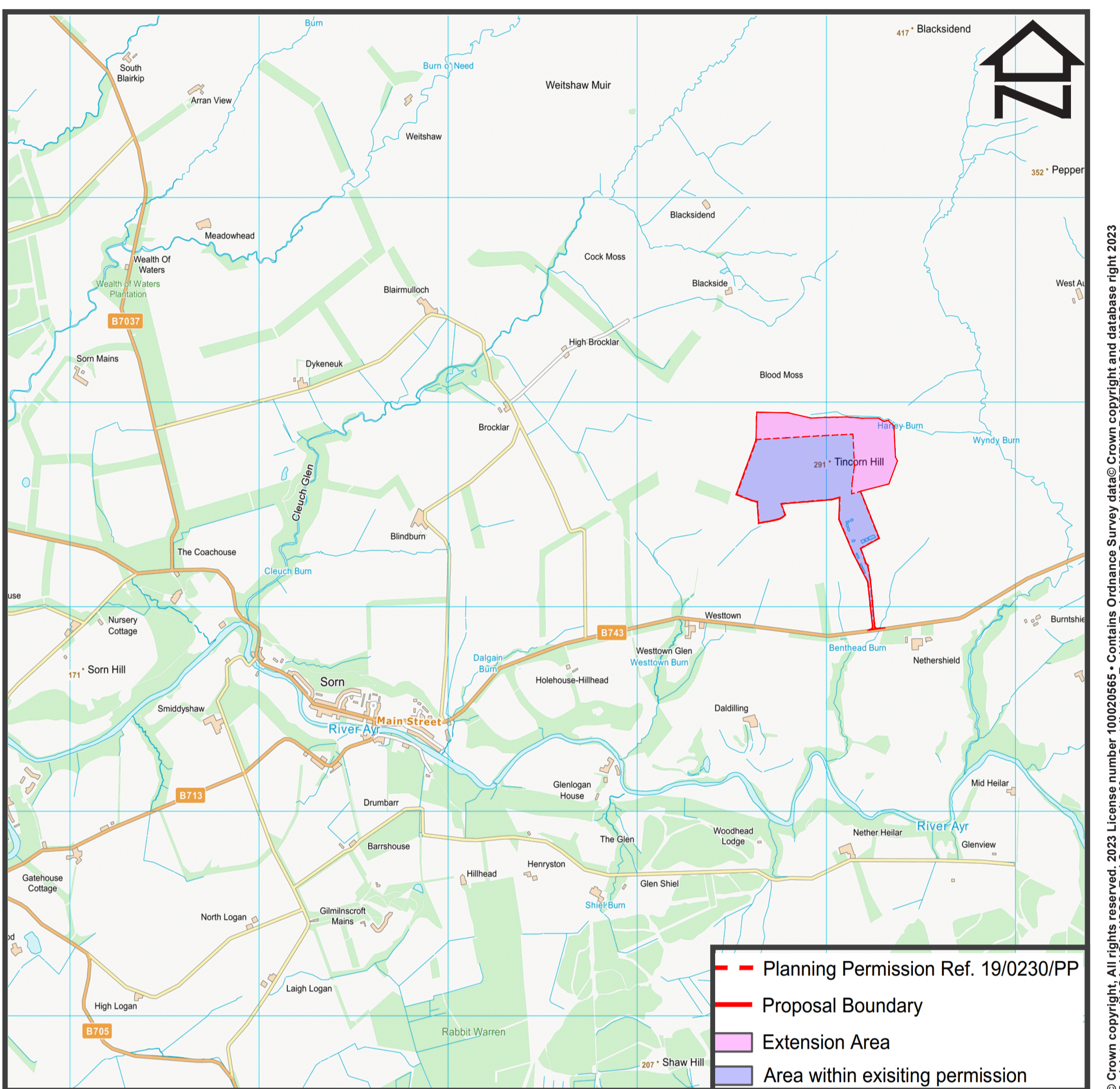
### SITE LOCATION

Tincorn Hill Quarry is located to the east of Sorn in East Ayrshire.

The closest settlements are the village of Sorn, located to 2km the east of the site and the village of Catrine, located 5km to the southeast.

Access to the quarry is taken via B743 which leads east towards the B713, A76 and A70 via Sorn.

Open moorland is located immediately to the north of the site whilst to the east and west of the site are agricultural fields. The River Ayr, woodland and agricultural land lies to the south of the site.



### GEOLOGY

The geology is mapped as the Silurian Swanshaw Sandstone Formation; however, exploration drilling has proven granodiorite and diorite of the Devonian Tincorn Hill Intrusion in this area, which is overlain by sandstone in the east.

The Silurian Swanshaw Sandstone Formation is indicated by the brown shaded area and the Devonian Granodiorite and Diorite by the small pink shaded area.

### SITE HISTORY

Development of Tincorn Hill Quarry commenced in the early 1990's. Since opening, the quarry has produced millions of tonnes of construction aggregates for use primarily within Ayrshire and west central Scotland.



2004



2011



2016



2018



2021

### MARKET AREA

The mineral extracted from the quarry is used locally, primarily within East Ayrshire and the surrounding areas.

The mineral extracted from Tincorn Hill Quarry is suitable for a variety of uses, including concrete and asphalt production.